



Mac4Lin Transformation Pack

Project Documentation
Version 1.0 RC2b

Revision 1.0 RC2b
November 15, 2008
Developer and Guide Copyright: Anirudh.R.Acharya (infra_red_dude)
Website: <http://sourceforge.net/projects/mac4lin>

Table of Contents

0. Project Overview.....	3
1. Getting Mac4Lin.....	4
2. GTK Metacity Theme.....	7
3. Using the GTK Icon Theme.....	10
4. Emerald Compiz Theme.....	11
5. GTK Cursor Theme.....	12
6. GDM Login Window Theme.....	12
7. GTK Splash.....	14
8. Usplash Screen (Boot splash).....	16
9. Font Configuration.....	19
10. GRUB Splash.....	20
11. Launcher Docks.....	21
12. Widget Layer.....	23
13. Pidgin Theme and Plugins.....	24
14. Exaile Avant-Window-Navigator Plugin.....	27
15. Mac OSX Sounds.....	28
16. iTunes media player skin.....	30
17. Firefox and Thunderbird Themes and Extensions.....	31
18. Mac4Lin and WINE.....	34
19. Desktop Backgrounds.....	37
20. FAQ and Troubleshooting.....	39
21. Credits and Information.....	40

Typographical Styles

Throughout this document we have used several typographic styles to mark specific things.

- **Red Bold Text** – Text marked with **red bold text** indicates things that require special attention. Usually paragraphs started with **red bold text** are things that you either want to make sure you do, or are things you may not want to do.
- **Bold text** – **Bold text** indicates the names of files or folders (directories), or partial file names.
- *Italicized text* – *Italicized text* indicate things that you need to click on. Any button or tab we talk about is also shown in *italicized text*.
- `Monospace font` – Text written in a `monospace font` on a `light gray background` are things that you need to type in. Text in a `monospace font` on a `white background` is simply text that you will see displayed in the Terminal or dialog box.

0. Project Overview

Do you want to give your GTK or Xfce desktop a dash of Mac OSX? Do you want to change the default look of your desktop to something like this? Then read on....



Is that Mac OSX Leopard??? Naah... Its just GNU/Linux + (GNOME|Xfce) + Mac4Lin!

The goal of this project is to bring the look and feel of Mac OSX on GNU/Linux and Unix-System like GTK, KDE and Xfce based systems. This document will present the procedure to install Mac4Lin pack & tweak certain things to get that almost perfect Mac OSX like desktop.

Mac4Lin Version 1.0 now includes a script that makes the install process much easier. Steps handled by the script will be indicated by the icon on the right. In addition, Mac4Lin now works on and Xfce-based systems, in addition to GNOME based systems, although there is another file that covers the installation of Mac4Lin on an Xfce system.



Note: Backup all files before deleting/replacing the original ones. The Mac4Lin development team is not responsible for any loss of data that may occur when installing and/or during the usage of Mac4Lin.

1. Getting Mac4Lin

Download the Mac4Lin .tar.gz file from <http://sourceforge.net/project/mac4lin/>. Once it's saved to your hard drive, locate it and right click on it, selecting *Extract Here* from the context menu.



Once you've extracted it open a Terminal and navigate to the location you extracted it to, i.e. `cd ~/Desktop/Mac4Lin_v1.0` if you saved and extracted the file to your Desktop. Then you need to run the install script by running `./Mac4Lin_Install_v1.0.sh`.

You'll see the script go through its paces as it starts installing things.

```
*****
```

```
Welcome to Mac4Lin v1.0 Installer
```

```
*****
```

```
Installing Mac4Lin UI...
```

```
Done!
```

```
Installing Mac4Lin Icons...
```

```
Done!
```

```
Installing Mac4Lin Cursors...
```

```
Done! Please enable the cursor theme from Appearances.
```

```
Installing Mac4Lin Emerald Window Borders...
```

```
Done!
```

```
Installing Mac4Lin misc. components...
```

The next thing the script will want to do is to install some things that need administrative access, but you have the right to do it yourself.

The following components require root access. You can opt out of installing them as they can be manually installed as well.

```
Would you like to install these components [y/n]?
```

If you say no, you will see

```
Components requiring root access not installed. Kindly install
them manually.
```

If you say yes it will ask for your password and then install the GDM Login Theme and Sounds and the GDM Theme.

```
Installing Mac4Lin GDM Login Theme and Sounds...
```

```
[sudo] password for [your username]:
```

```
Setting GDM Theme
```

```
Done!
```

```
Please assign the sounds to events manually. All sounds are
saved in /usr/share/sounds
```

The installation script can't change the settings for your system sounds so you'll need to do it yourself. You can find them all in **/usr/share/sounds**. The script will continue to run and will install the Mac4Lin Background and Pidgin theme. You'll see a note that says

```
The current Pidgin theme has been backed up as
~/Mac4Lin_v1.0/Backup/pidgin_backup.tar.gz
```

```
Note that Mac4Lin_v1.0 will be in your home folder
```

```
Please enable the Pidgin AWN plugin from within Pidgin and place
a launcher for Pidgin on AWN
```

If you already have a launcher for Pidgin set up on your dock you shouldn't find any issues. You will want to double check in Pidgin that the AWN plugin is enabled. The plugin allows AWN to change the icon based on your status and activity, as described in section 12.

Whether you let the installation script install components that require administrative access or not when the script finishes you'll see

```
*****
```

```
Mac4Lin installation complete!
```

```
Please refer to the documentation for
advanced installation instructions
(for installing usplash, grub etc.)
```

For best results, log off and log back
in for all changes to be effected

Press any key to continue...

For best results you should log out and then log back in. You don't need to reboot, but you should definitely use *System* → *Quit...* → *Log Out* to make sure all of the changes you made are set properly.

There are still some manual changes you need to make but this gets you through the main part of the installation. The next section will start looking at rest of the things that you need to do, mostly manually, to install Mac4Lin.

GNOME Instructions for GNOME 2.22 Systems

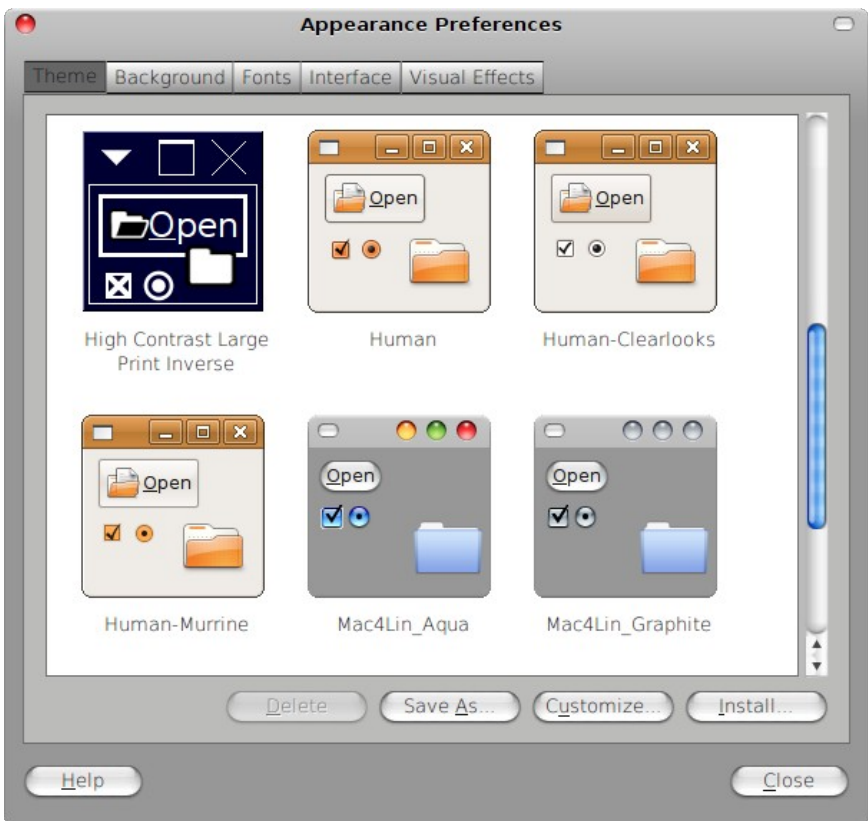
This section of the documentation is written for GNOME 2.22 based systems. The GNOME version can be checked by clicking on System > About GNOME. If your computer runs an earlier version of GNOME you may want to refer to the older documentation, available for downloading as a PDF document at <http://sourceforge.net/projects/mac4lin/>. The screenshots shown may differ from your computer, but these were taken on a system starting with the Human-Murrine Theme.

2. GTK Metacity Theme

2.1 Installing the GTK Metacity theme



Go to *System* → *Preferences* → *Appearance*. If you ran the installation script you will see a new theme labeled *Custom...* This is due to a glitch in how the theme installed, but if you scroll down you'll see two new themes called *Mac4Lin_Aqua* and *Mac4Lin_Graphite*. The thumbnails show the *Mac4Lin_Aqua* theme uses colorful “traffic lights” for the Minimize, Maximize/Restore and Close buttons and check boxes/radio buttons, while the *Mac4Lin_Graphite* uses a more neutral set of buttons. The theme you should use is purely a matter of personal preference.



You will also see a pair of themes labeled *Mac4Lin_MacMenu_Aqua* and *Mac4Lin_MacMenu_Graphite*. The last two themes are for those running the Global Menu (MacMenu) hack. If you aren't sure of what the Global Menu (MacMenu) is and don't know if you've installed it you should stick to the themes that don't say *MacMenu*.

Please Note: The MacMenu hack brings the OSX standard of all menus appearing in a single location, in the top panel on your desktop. As of this writing it still doesn't

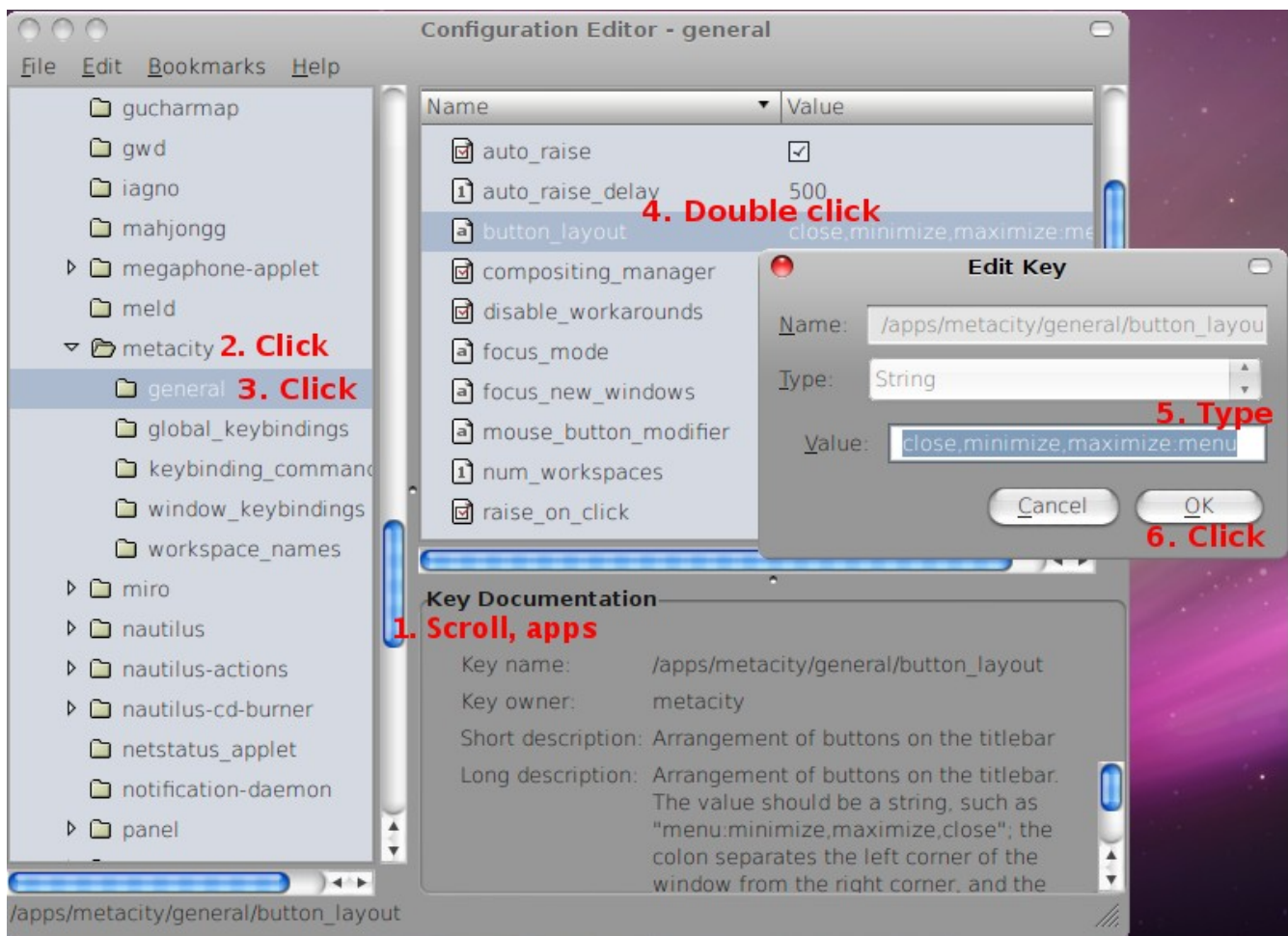
work with all applications, especially non-GTK applications (notably including the Opera web browser, Mozilla Firefox and Thunderbird, and the OpenOffice.org office productivity suite), but there are community members who are hard at work to bring MacMenu out of the realm of hacks and into the real of a real option for Linux, especially GNOME, users. For more information read the thread at <http://ubuntuforums.org/showthread.php?t=241868> in the Ubuntu Forums and the Global Menu wiki page at https://wiki.ubuntu.com/global_menu).

Select the theme you want to use (you should only use the MacMenu themes if you've specifically installed MacMenu). Despite what the installation script said the Mac4Lin Cursors will already be enabled when you select which Mac4Lin theme you want to use.

2.2 Shifting the order of the titlebar buttons



The installation script will move the “traffic lights”, the minimize, maximize and close buttons, on the left hand side of the titlebar in Metacity (instructions for using the Emerald/Compiz Fusion theme appear in Section 3). If you want to make the change manually, press Alt+F2 and type in `gconf-editor`. Press *Enter* or click *Run* and a new window should appear. In the sidebar, go to `/ → apps → metacity → general`. Back on the right hand side, double click on `button_layout`. Delete the value that's there and type in `menu: minimize, maximize, close`. Then Click *OK* and close the application Configuration Editor. The buttons will now be on the left side of titlebar. To restore the buttons to the original layout, just replace the string with `close, minimize, maximize: menu`.



3. Using the GTK Icon Theme

As soon as you enable one of the Mac4Lin themes you have all of the Mac4Lin icons. The theme also includes icons for many applications, as well as for the basic parts of a GNOME-based GTK/Linux distribution. You will, however need to add some applets to complete the OSX look.

3.1. Adding the necessary panel applets

For the Search/Network/ Wi-Fi icon to work correctly, you need to add relevant applets to your GNOME panel. Right click on an empty area on the GNOME panel and select *Add to panel...* Then scroll down and select the **Search for files** applet. Now again follow the first part, this time select the **Network Monitor** Applet. Look at the main screenshot for suggested placements on the panel.



3.2. Extra “goodie” icons

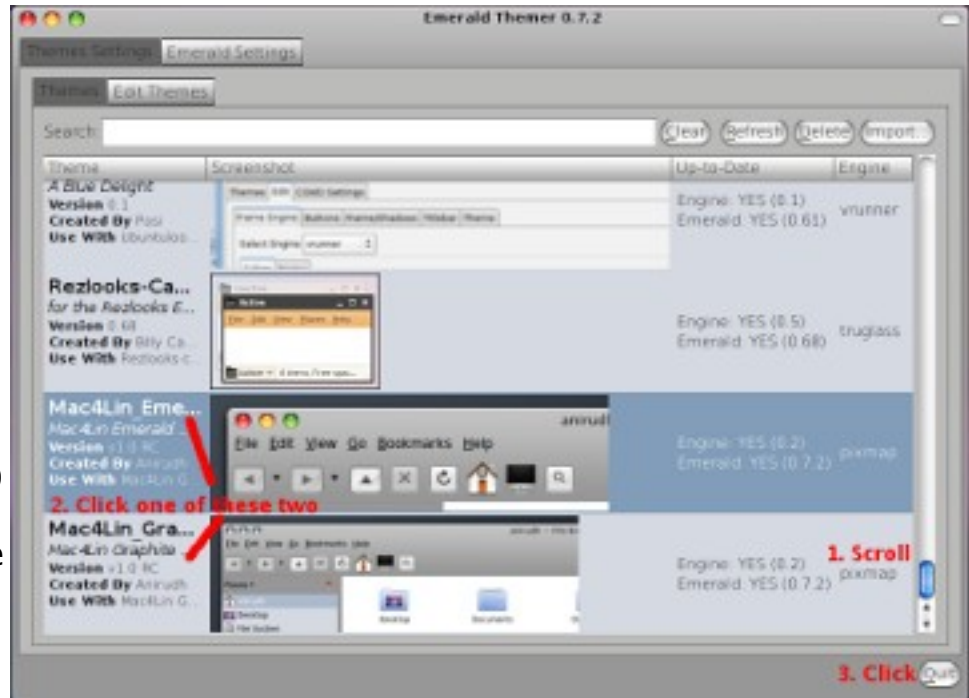
This theme also contains a lot of extra icons. To access them, Go to *Places* → *Home Folder* and press **Ctrl+H**: A number of new folders should appear. Look for the one named **.icons** and open it. Then open the **Mac4Lin Icons** folder and you should see a folder named **EXTRAS**. Double click the folder to open it. Some of the icons in the pack are shown on the left

4. Emerald Compiz Theme

If you are using Ubuntu, it will come with Compiz Fusion pre-enabled. You just need to install your graphic card driver (if you need to, that is). After that go to *Applications* → *Accessories* → *Terminal*. Type in `sudo aptitude install emerald`. That will install Emerald, a window decorator you will need if you don't like the GTK window decorator.



The installation script installs two Emerald themes, but you will have to enable the one you want to use. Go to *System* → *Preferences* → *Emerald Theme Manager*. Scroll down until you see the Mac4Lin themes and select either the Mac4Lin_Emerald_v1.0 theme if you use the Aqua GTK theme or the Mac4Lin_Graphite_Emerald_v1.0 theme if you use the Graphite GTK theme. Once you click on the theme it will be enabled, so once you have the theme you want enabled simply click *Quit* to close the Emerald Theme Manager.



5. GTK Cursor Theme



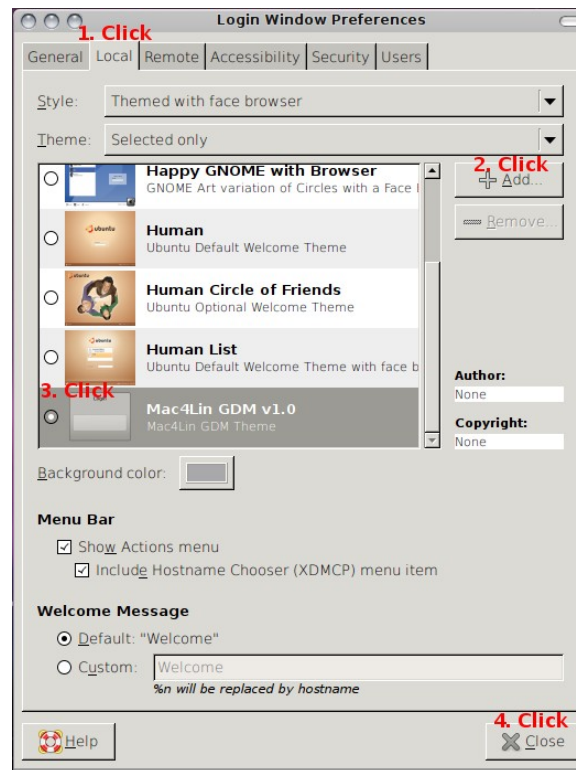
The installation script installs the Mac4Lin Cursor Theme automatically, and when you activate one of the Mac4Lin themes You will also enable the cursor theme.

6. GDM Login Window Theme

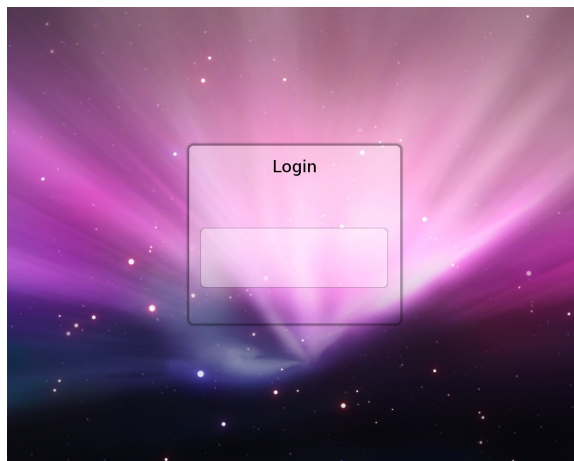
6.1 Installing the GDM login theme

Unfortunately the installation script won't install the GDM theme properly so you'll need to install it manually.

Go to *System* → *Administration* → *Login Window* (entering your Administrator password when asked) and select the **Local** tab. Click the *Add* button and select the file *Mac4Lin_GDM_v1.0.tar.gz*. Scroll down until you see the Mac4Lin GDM with its preview and click the circle next to it to select the theme. Make sure *Selected only* is chosen above as *Theme*, or else you will have a random theme selected from any theme checked when you log in. Click the Close button and log out (*System* → *Administration* → *Log Out*) to verify that you have the Mac4Lin GDM Login Theme enabled.



Here's a sample screenshot of the Mac4Lin GDM Login theme:



7. GTK Splash



7.1. Configuring the GTK splash theme with gTweakUI

Although gTweakUI hasn't been updated since 2004, it is still very easy to apply the splash theme with it.

To install it, Go to *Applications* → *Accessories* → *Terminal* and type in `sudo aptitude install gtweakui`. Once it's installed leave the Terminal window open for now.

Type in “`sudo nautilus`” (without quotes) and in when the Nautilus window opens it will look different because it won't use the same theme that you have selected. Navigate to the `/home/<your username>/<the extracted Mac4Lin folder>`. Copy all splash images files from the **GTK_Splash** folder to the folder `/usr/share/pixmaps/splash`.

Now go to *System* → *Preferences* → *gTweakUI* → *Session*. Then click on the big square at the bottom and select the image you want as your splash screen.



7.2. Configuring the GTK splash theme with Ubuntu Tweak

This application is used by a lot of Ubuntu users, and is updated regularly, so this is the better choice if you want to keep up-to-date. With the release of Ubuntu Tweak 0.3.4 it can now keep itself updated, as well as several other programs. You can get the current version of Ubuntu Tweak at <http://ubuntu-tweak.com/>.

Go to *Applications* → *Accessories* → *Terminal* and type in `sudo nautilus` and in the address bar, type in `/home/<your username>/<the extracted Mac4Lin folder>`. Copy all the images files from the folder `/Mac4Lin_v1.0/GTK` to the folder **`/usr/share/pixmaps/splash`**.

Now go to *Applications* → *System Tools* → *Ubuntu Tweak*. On the sidebar, go to *Startup* → *Session Control*. Click the big box at the bottom to change the splash screen.

8. Usplash Screen (Boot splash)

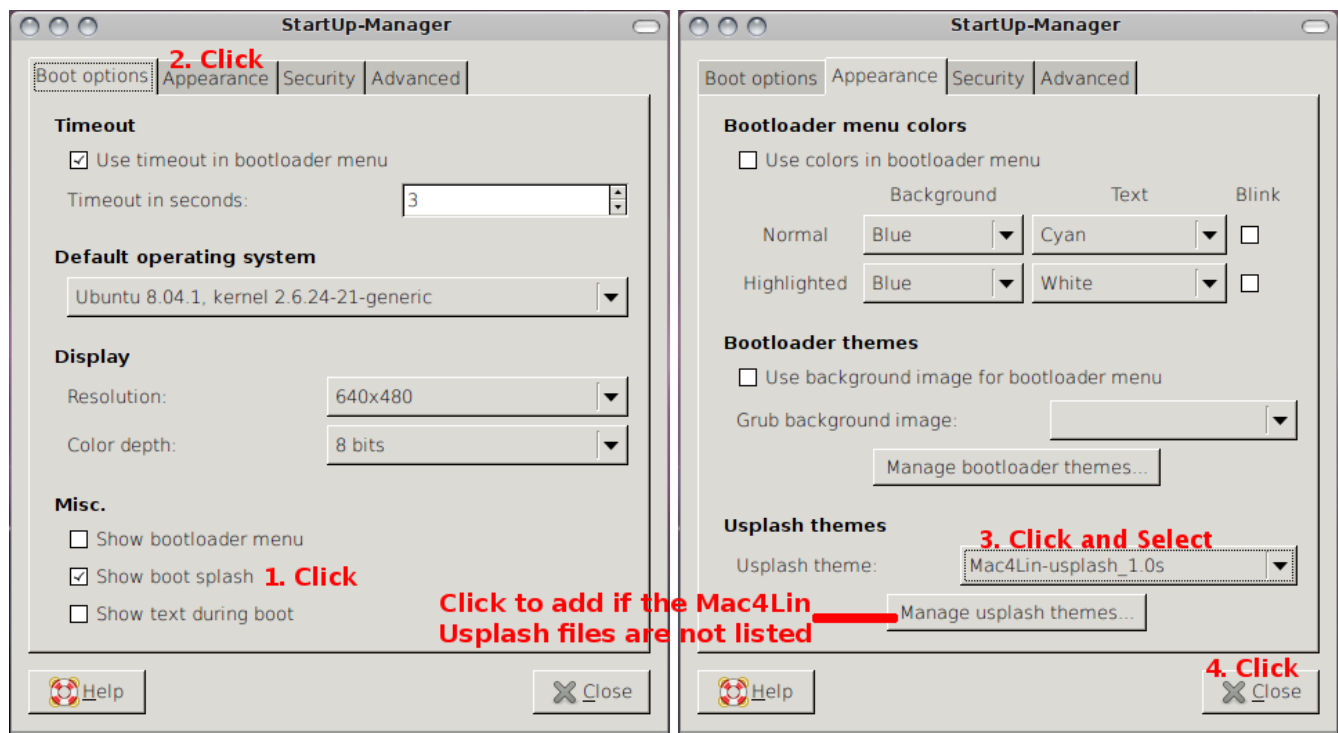
8.1. Installing the Usplash startup theme

The installation script can't install the Usplash boot theme so you'll need to do it yourself. First go into the folder that you extracted Mac4Lin into (not the Mac4Lin_v1.0 folder that the installation script created), and open the Usplash folder. Select both files in that folder, right click them, and select *Extract Here*. That will get you the actual Usplash themes that you need.

Configuring start-up related things are made easy with the application StartUp-Manager. To install go to *Applications → Accessories → Terminal*, and type in `sudo aptitude install startupmanager`. Don't close the Terminal after installing StartUp-Manager.

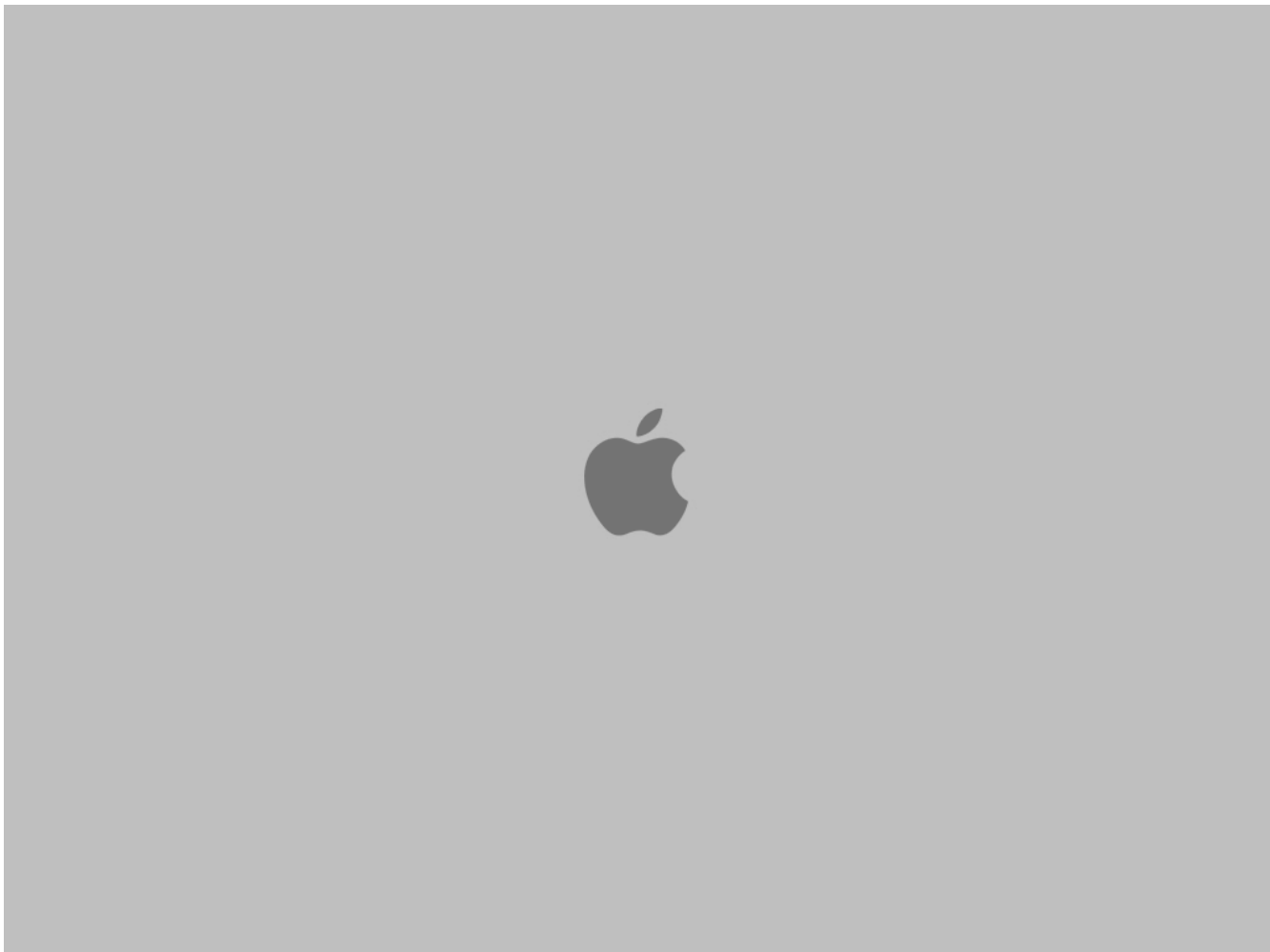
Important: Use StartUp-Manager at your own risk. If you mess it up, your computer might not boot up properly! It is *strongly* recommended that you back up the GRUB menu list before you do anything with StartUp-Manager. Open up Terminal again (with *Applications → Accessories → Terminal*) and type in `sudo cp /boot/grub/menu.lst /boot/grub/menu.lst.copy`.

Once you have the two Usplash files extracted go to *System → Administration → StartUp-Manager*. In the *Boot options* tab, check the *Show boot splash* option under *Misc.* Now move to the *Appearance* tab.



Click on *Manage usplash themes...* near the bottom and in the new pop-up, press *Add*. Browse to where the **.so** files have been placed and add them. Now click the drop-down menu and select your Usplash theme.

Sample screenshot of Bootsplash screen:



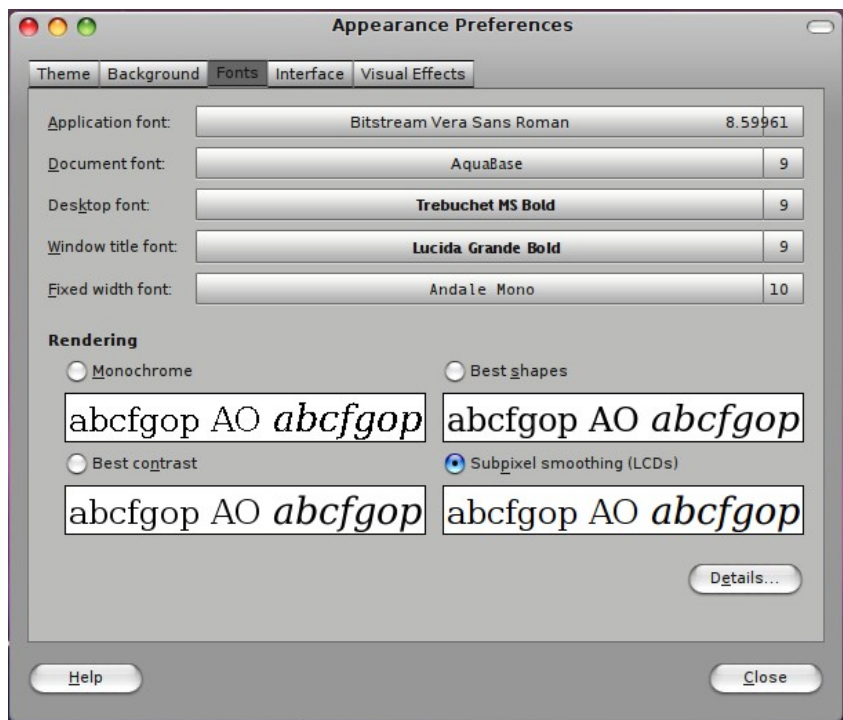
9. Font Configuration

9.1. Installing the Mac OSX fonts

Firstly, go to the extracted Mac4Lin folder and look for the subfolder **Fonts**. Right click and press *Extract Here* on the file **Fonts.tar.gz**. A new folder, **fonts**, should appear. Open it and you should see a collection of forty-four **.ttf** files.

To install Mac OSX fonts, goto *Places* → *Home Folder*. You need to show hidden configuration folders and files, and you already know how to do it: press Ctrl+H. If you don't see a folder called **.fonts**, right click anywhere and press *Create Folder*. Name it **.fonts**. Now simply all of **.ttf** files from the extracted folder above to the **.fonts** folder.

An example of font settings using the newly added fonts:



10. GRUB Splash

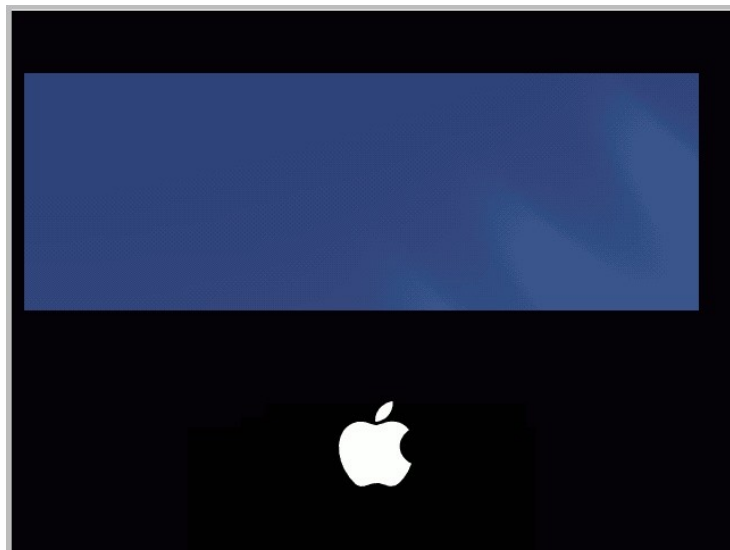
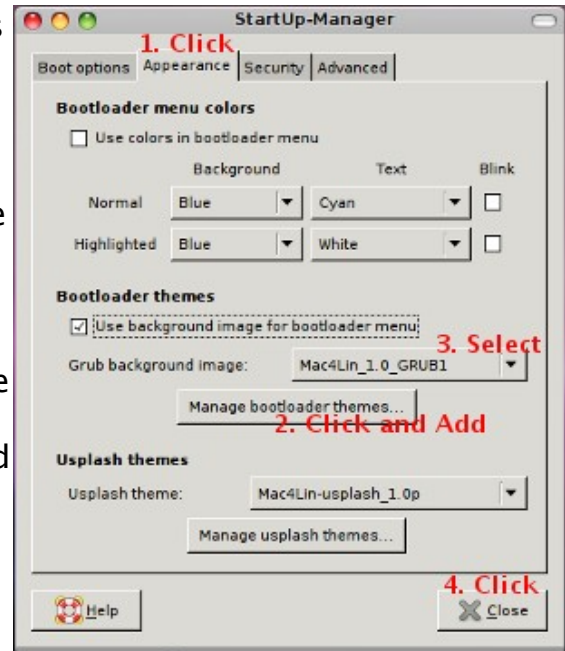
You will again need StartUp-Manager to configure this part. If you still haven't installed it, goto *Applications* → *Accessories* → *Terminal* and type in `sudo aptitude install startupmanager`. Now go to *System* → *Administration* → *StartUp-Manager*.

Use this software at your own risk, if you mess it up, your computer might not boot up properly! So it is strongly recommended that you back up the GRUB menu list before you do anything with StartUp-Manager. Open up Terminal again (by *Applications* → *Accessories* → *Terminal*) and type in `sudo cp /boot/grub/menu.lst /boot/grub.menu.lst.copy`. Don't close the Terminal yet, though.

Now type in `sudo open nautilus`. When the file browser opens up, type in the address bar `/boot/grub`. Right click, press *Create Folder*, and name it `sp1ash`. Copy and paste all `.xpm.gz` files from the Mac4Lin folder **GRUB**.

Goto *System* → *Administration* → *StartUp-Manager*. Goto the *Appearance* tab. Now click on *Manage bootloader themes...* and click *Add*.

Locate the `.xpm.gz` image you want to set as the GRUB boot screen and add it. Select the image from the *Grub background image* button.



11. Launcher Docks



Compiz is required to run Avant Window Navigator (AWN.) Like mentioned earlier, Ubuntu now has Compiz enabled by default, you may just need to install your graphics driver. (We have not listed AWN from Ubuntu's repositories because it lacks features we need.)

11.1.1. Installing the latest version of AWN

You can get installation instructions for AWN for Ubuntu/Debian, Gentoo, Mandriva, Fedora, openSUSE and Arch Linux from the AWM Wiki (<http://wiki.awn-project.org/DistributionGuides>). For Ubuntu we recommend using reacocard's PPA due to the fact that the official repository packages may be missing some features we need. You can get instructions for installing AWN from reacocard's PPA from his thread on the Ubuntu Forums at <http://ubuntuforums.org/showthread.php?t=762363>.

You can also install it from the source code from the instructions at <http://wiki.awn-project.org/InstallingFromSource>.

11.1.3. Installing the AWN theme

Goto System → Preferences → Awn Manager. On the sidebar, click Themes, and back on the right, press Add. Locate to the extracted Mac4Lin pack and open the folder named AWN. double click the .tgz file inside, and after the theme is added, check the circle (next to the theme preview.) Press Apply.

11.1.4 Extra AWN customizations

You might also want to do these following things:

- On the sidebar of Awn Manager, click General. At the top, click the tab *General*, and check the option *Automatically start AWN on login*.
- In the *Bar Appearance* tab, choose *3D look* from the drop-down of *Look* and uncheck *Enable rounded corners*.
- This is the emulation of the Mac OSX Dock's Stacks. *Goto System → Preferences → Awn Manager. Goto Applets* (on the sidebar), and look for an applet named *Stacks Applet*. Click it, then click *Activate*. A new icon should appear on your dock. Right click it and press *Preferences*.
 - On the tab *Backend*, check *Folder backend* and navigate to the folder you want this applet to display. You can also use the *File backend* and simply

drag and drop the items you want in your Stacks.

- Goto the *Applet Layout* tab and for the *Applet title*, name it what you want displayed on the dock. (For example, Leopard has it named “Downloads” for all downloaded files by default.)
- We don't have custom icons for your Stacks, but you can click the box for *Composite applet icon* to use an icon based on the file types you have in your Stacks. You can also change the *Empty icon* and *Full icon* if you have icons you want to use. Click the images and in the new pop-up, navigate to the folder housing your icons, they are probably in the *.icons* folder off of your Home folder (*~/icons*).
- Finally, goto the tab *Stack Layout* and choose *Curved gui* from the drop-down for an OSX-like curve to your Stacks.
- Click *Apply* to close the Preferences window. If the folder has a lot of items you may find a delay before you are able to use the AWN Stacks applet.

11.2. Cairo–Dock

Some people like AWN, but some people love the Cairo–Dock (<http://www.cairo-dock.org/>). Most of their site is in French, but they do have a section of their wiki in English (http://www.cairo-dock.org/ww_page.php?p=Accueil&lang=en).

While you don't need Compiz to run Cairo–Dock (or AWN) you do need some kind of compositor like xcompmgr or the metacity compositor. We suggest you look into both dock technology and decide which one serves your needs best. The plugins and applets we provide are for AWN, however.

11.2.1. Installing Cairo–Dock

Goto *System* → *Administration* → *Software Sources*, and goto the *Third-Party Software* tab. Click *Add...* and type `deb http://repository.cairo-dock.org/ubuntu`. Press *OK*, then click *Add* again. This time, type in `deb-src http://repository.cairo-dock.org/ubuntu`. and *OK*, *Close*, then *Reload*. Open up Terminal and type in `sudo aptitude install cairo-dock cairo-dock-plugins`.

12. Widget Layer

12.1. Installing Screenlets, making a widget layer, etc.

Screenlets are a great way to add OSX-like widgets to your Ubuntu desktop. Tom Dryer created a great HOWTO on installing Screenlets, and in addition to showing you how to install it he also has information on getting an OSX-style dashboard.

Rather than reprint it all here and possibly miss an update to the page, we'll provide you with a link to the tutorial on his Tombuntu.com website.

<http://tombuntu.com/index.php/2008/03/17/os-x-like-widgets-with-screenlets-on-ubuntu-3rd-update/>

13. Pidgin Theme and Plugins

Pidgin, the default Instant Messenger for Ubuntu, has the ability to communicate with your AWN dock and change the icon according to your current Pidgin status. There is also a Pidgin iChat Theme to let it look like the OSX iChat program. These instructions will show you how to install the plugin and theme in Pidgin 2.5.x.

13.1. Pidgin Plugin for AWN

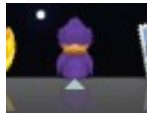
If you have installed previous versions of the Pidgin plugin for AWN please close Pidgin and delete the old plugin before installing the new version. This will prevent any problems when you install the new version. If you're not sure where it may be installed, open a Terminal window and run `locate pidgin_awn`. This will provide you with a list of all known copies of the plugin. You want to look for locations such as `~/.purple/plugins` and `/usr/lib/pidgin`.

Move (or copy) the file `pidgin_awn.so` to `~/.purple/plugins`. If the `plugins` folder doesn't exist in `~/.purple` you can create it yourself. Create a launcher for Pidgin in AWN, and launch it. Once Pidgin opens go to *Tools* → *Plugins* to open the Plugins window. Look for the AWN plugin and click the checkbox to enable it. You'll see a change in your icon on AWN immediately. right click on the Pidgin tray icon and select *Plugins*. Enable the *AWN plug in*.

Default Pidgin icon on the AWN Dock:



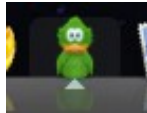
Status Idle/Invisible:



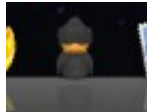
Status Available:



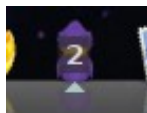
Status Connecting:



Status Offline:



Unread message (number of unread messages are shown):



13.2. Pidgin iChat Theme

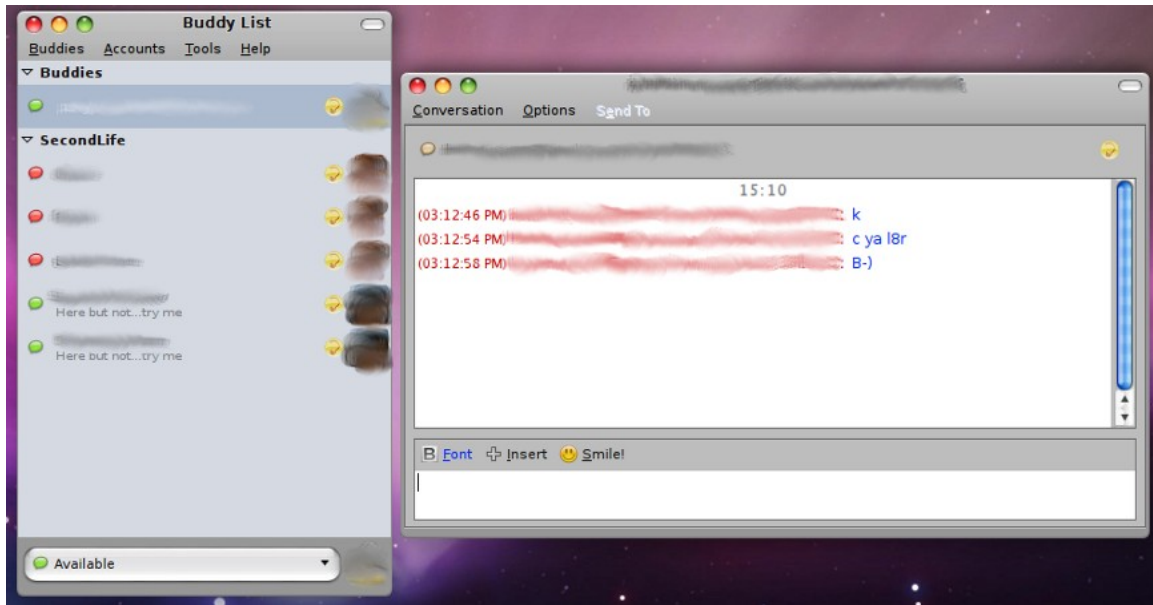
While the Pidgin supports smiley and Guification themes, right now it doesn't support themes, or "skins". The devs are working on a Theme Manager for a future version of Pidgin, but it currently right now it gets it's theme from the active GTK theme. Luckily that means it can get some theme elements from the Mac4Lin GTK theme we installed back in section 7. Unfortunately the default Pidgin look still doesn't being a true OSX look to the program, even with the Mac4Lin GTK theme.

To fix that we've included an iChat theme for Pidgin. You will need close Pidgin for this next step so go ahead and make sure Pidgin is completely closed and not just minimized to your notification area. Open a file manager window to where you extracted the installation files for Mac4Lin and open the Pidgin folder. You'll see the from the current Extract the theme archive to a temporary folder. In the **Pidgin** folder from the extracted Mac4Lin files you'll see a file called **Mac4Lin_Pidgin_v1.0.tar.gz**. That's the Pidgin iChat Theme, so right click on it and select *Extract Here*, which will give you a folder called *pidgin*. With the `~/Mac4Lin_v1.0/Pidgin` folder open in your file manager you'll need to open another file manager, although this new one needs administrative rights so run `sudo nautilus` in a Terminal and in the window that opens navigate to `/usr/share/pixmaps`.

You'll see that there's already a **pidgin** folder there so we'll need to replace it. You may want to back up this folder in case you need it again so make a copy of it before you do anything else. Now click and drag the **pidgin** folder from the `~/Mac4Lin_v1.0/Pidgin` folder where you extracted it from to the window with `/usr/share/pixmaps`. (You can Ctrl-click and drag the folder to copy the folder to make sure you leave a copy where you extracted it. You'll see a plus sign next to the cursor to show that the selected item is being copied.) You'll get a dialog box warning you that there's already a folder named **pidgin** and asking what you want to do. Click the button that says *Merge All* since the folder has subfolder. Another dialog box will pop up warning you that there's already a file named **previous.png**. Click on the *Replace All* button and wait for the files to be copied over. This will install the iChat Theme for Pidgin.

Due to the way that Pidgin handles it's theme you will need to reinstall this theme anytime you install and update or upgrade to Pidgin or the update process will overwrite the iChat icons with the new default versions.

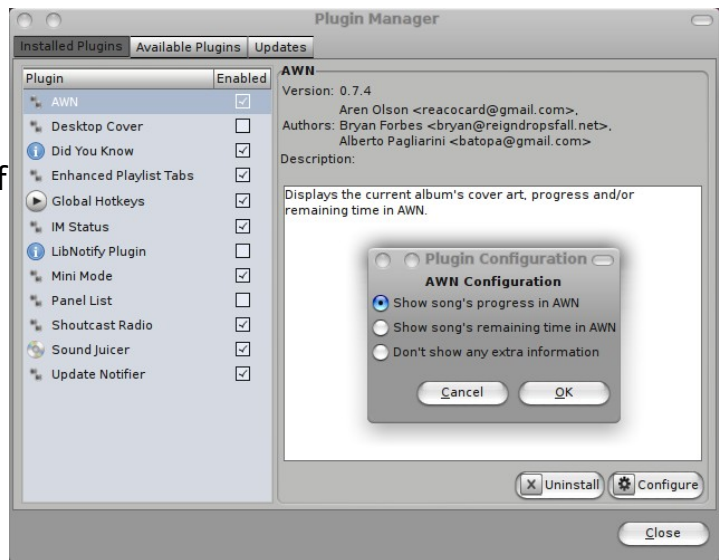
This is a screenshot of Pidgin with iChat Theme:



14. Exaile Avant–Window–Navigator Plugin

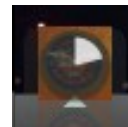
If you use the Exaile Music Player there is an AWN plugin that you can use to show the album cover art for the track currently playing, as well as the progress and/or remaining time on the AWN dock. We used to include it with Mac4Lin but it's getting updated fairly regularly so we decided to simply let you get it from Exaile. The Exaile Music Player is available in the Ubuntu Universe repository for both Hardy Heron and Intrepid Ibex. If you want a newer version than the official repository you can get it from the Exaile Developers Personal Package Archive (PPA) at <https://launchpad.net/~exaile-devel/+archive>. **If you use the PPA make sure you're using the proper sources for the version of Ubuntu that you're using.**

Launch Exaile and go to Edit → *Plugins* → *Available Plugins*. Select the *AWN* plugin and click the *Install* checkbox for beside it, then click the *Install* button. When you see the plugin fall off the list switch to the *Installed Plugins* tab, select the *AWN* plugin and click on the *Configure* button. Select whichever option you prefer, then click *OK* to close the dialog and click the *Close* button when you're finished with your plugins. The status will now be shown on the Exaile launcher on AWN, depending on which option you selected on the configuration dialog.

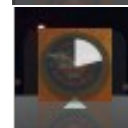


PLEASE NOTE: Some users have not been able to use this Plugin. So it may or may not work for you.

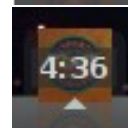
Idle Exaile icon on AWN:



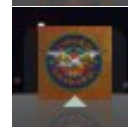
Exaile icon showing the song's progress:



Exaile icon showing the remaining time:



Exaile icon showing the album cover but no extra information:

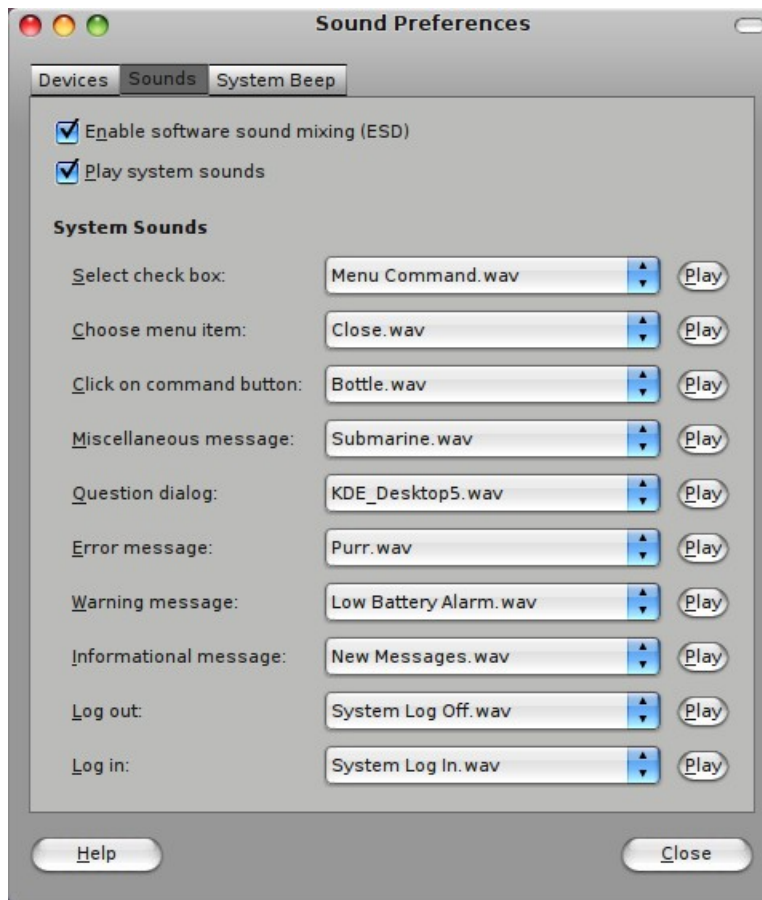


15. Mac OSX Sounds

15.1. Mac4Lin System Sounds

Mac4Lin now comes with two sets of sounds, System Sounds and Pidgin sounds. Starting with the system sounds, go to the **Sounds** folder where you extracted Mac4Lin, select the `Mac4Lin_Sounds_v1.0.tar.gz` file and right click on it by selecting *Extract Here*. Open the resulting folder and you will see the 34 files that come with Mac4Lin. Open a Nautilus window with administrative rights by running `sudo nautilus` in a Terminal (or with Alt-F2) and navigate to `/usr/share/sounds`. Copy the folder from where you extracted it to `/usr/share/sounds` and you can easily select the sounds for GTK events.

Open the Sounds screen at *System* → *Preferences* → *Sound* → *Sounds*. There you can assign sounds to events as you wish. An example screen is shown here:

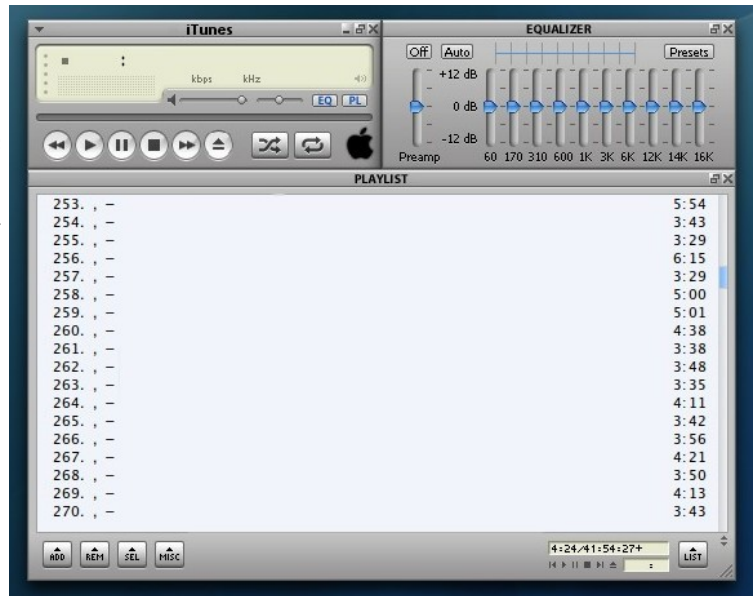


15.1. Mac4Lin Pidgin Sounds

With Mac4Lin 1.0 we've added a set of sounds for use in Pidgin as well as the system sounds. Extract the **Mac4Lin_Pidgin-Sounds_v1.0.tar.gz** file and copy them to **/usr/share/sounds** as you did with the system sounds and set them up as you like by using *Tools* → *Preferences* → *Sounds*.

16. iTunes media player skin

Copy the **Mac4Lin_MP_v1.0.tar.gz** file from the **MP** folder to the appropriate skin folder. You may need to extract the archive and move the **Mac4Lin_iTunes_v0.4** folder to the location indicated for each media player below. If the folder does not exist you can create it.



1) XMMS (no longer supported by Ubuntu, XMMS2 has no GUI)

~/.xmms/Skins folder

2) Beep Media Player (replaced by BMPx, which doesn't support skins at this time)

~/.bmp/skins folder

3) Audacious

~/.local/share/audacious/Skins folder

After extraction goto the Preferences > Skin and select the Mac4Lin iTunes skin to apply.

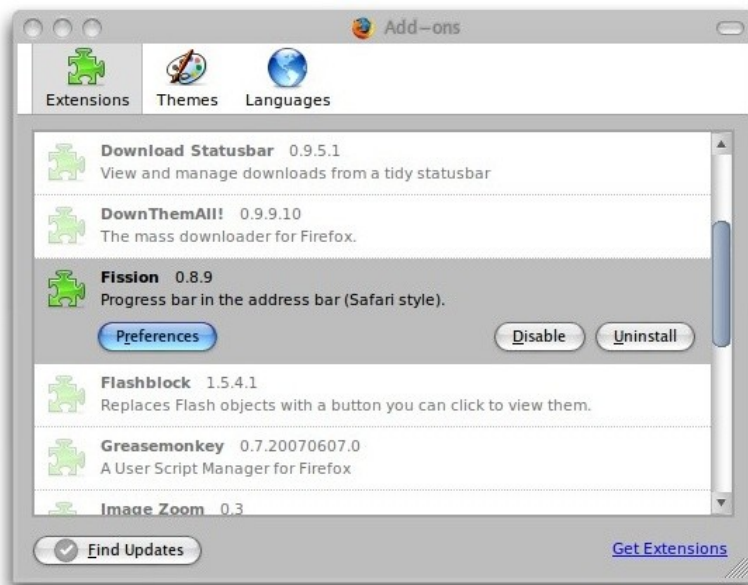
Note: ~/ indicates the folder /home/<user name>

17. Firefox and Thunderbird Themes and Extensions

17.1 Firefox Extensions

Open the Firefox Add-ons Manager by selecting *Tools* → *Add-ons*, and drag & drop the .xpi files from the Mac4Lin **Mozilla/Firefox/FF2Extensions** folder to the Firefox Add-ons Manager window. The versions we're including in Mac4Lin will work with Firefox 3.0.x and are the latest versions available at the time of Mac4Lin's release. We recommend that you use Firefox's add-on update feature to periodically check for updated versions of the extensions.

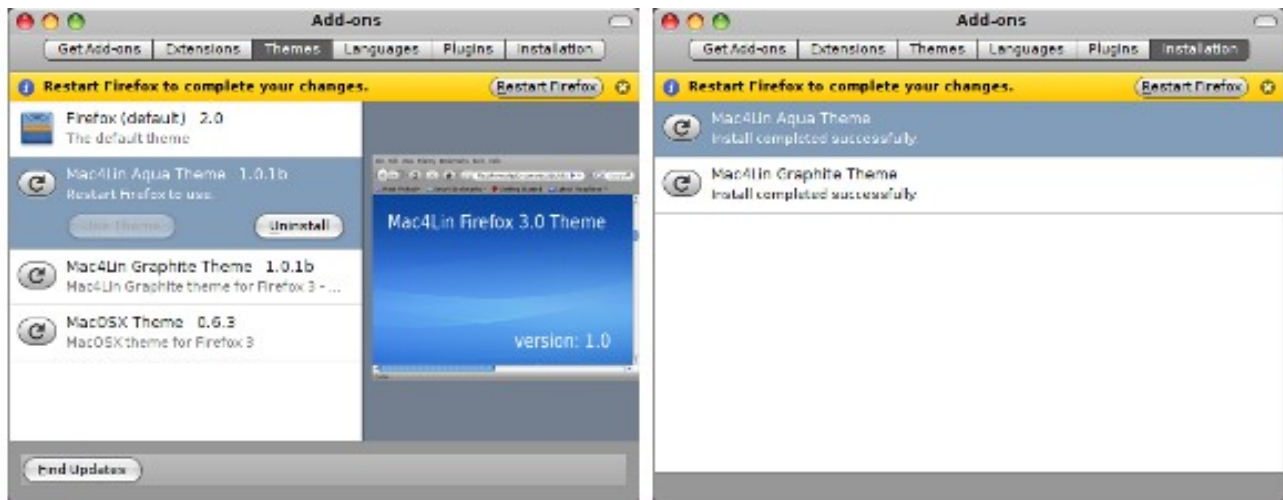
When the Software Installation window opens and you are able to, click the *Install Now* button. Once the extension is installed restart Firefox.



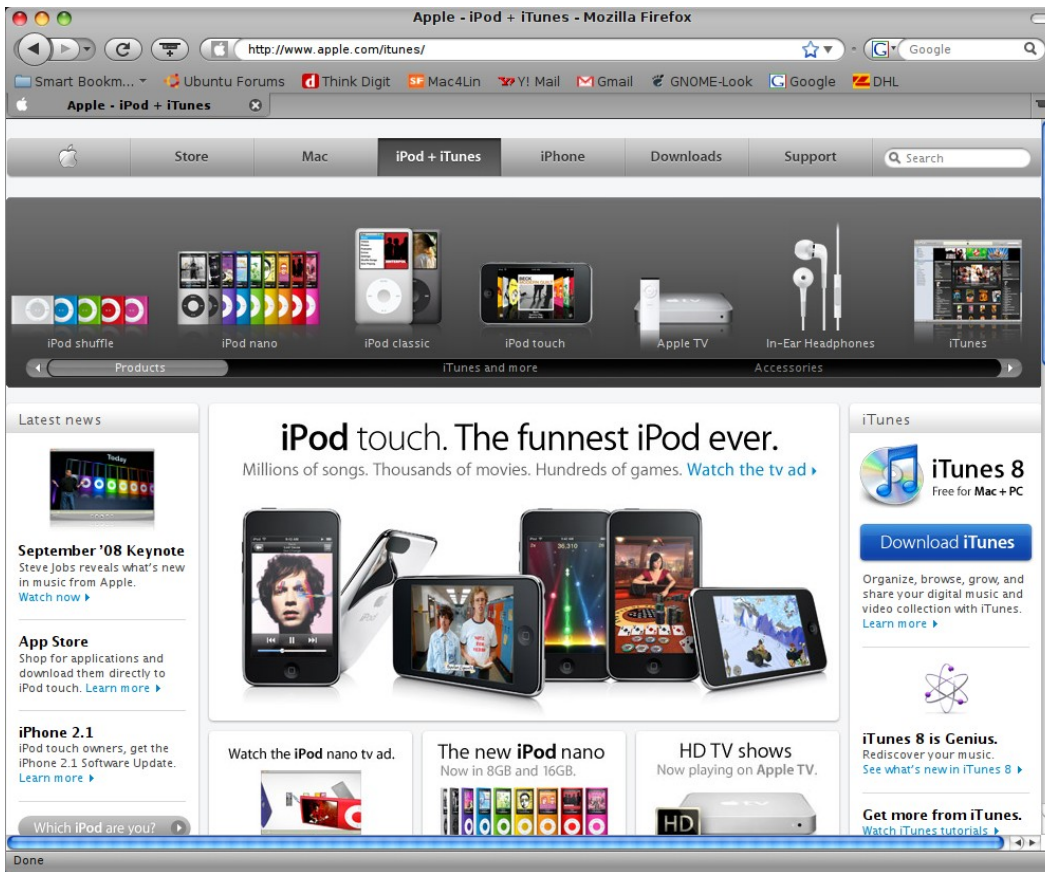
17.2. MacOSX Firefox Themes

Previous versions of Mac4Lin used the Vfox|Finder theme, but it hasn't been updated for use with Firefox 3. DrP has been kind enough to take the Mac OSX Theme and customize it for Mac4Lin. There are two versions included, one for OSX-style scrollbars with the buttons at the bottom and one for the usual Linux-style positioning of the scrollbar buttons at the top and bottom of the bar. You can pick the version you want to use.

To install the themes simply open the Add-ons Manager window again and drag & drop the .jar file onto the Themes tab. As above, click the *Install Now* button when it is available. Restart Firefox once the theme is installed to use the theme.

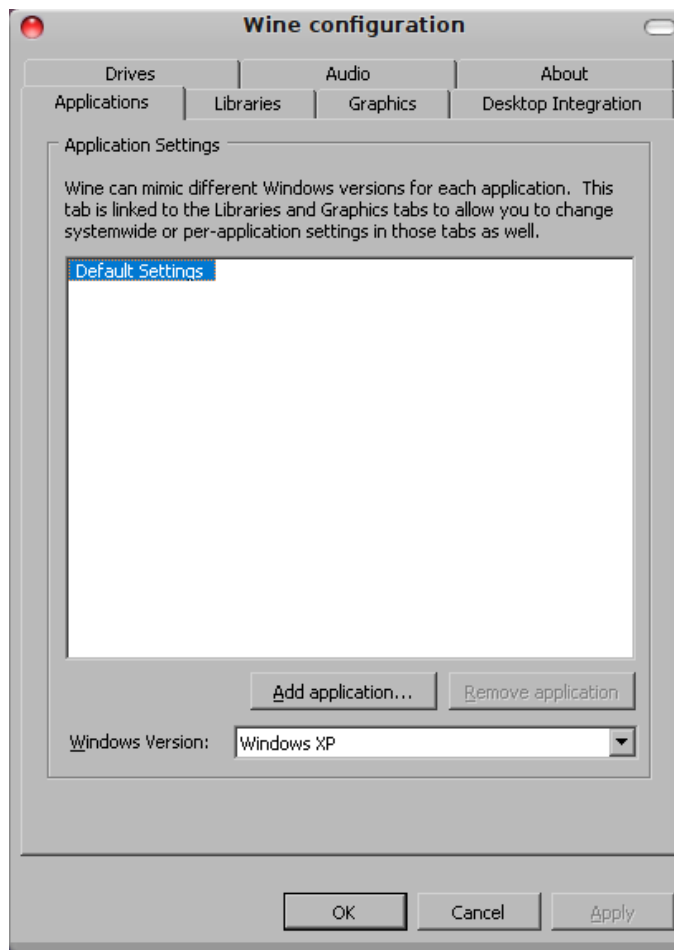


After applying the extensions and add ons Firefox will now look like this:



17.3 Thunderbird Themes and Extensions

There are also themes and extensions for Mozilla's Thunderbird email client. Install them the same way you did for Firefox and your Thunderbird will join in the OSX-themed goodness.



19. Desktop Backgrounds

19.1. Applying the desktop backgrounds



In the Mac4Lin folder that you extracted you will find a folder named **Wallpapers**. The first wallpaper has been installed for you by the installation script, but there's a second wallpaper you can use as well. Both images measure 2560x1600 pixels and are formatted for widescreen monitors, but you can easily edit them in GIMP or your favorite image editing program to fit your screen resolution.

You will also find a file called `Leopard_Wallpapers.tar.gz` in the Mac4Lin SourceForge download area that contains 17 other wallpaper images that you can use. As with the wallpapers included with Mac4Lin they are formatted for wides monitors and all are 2560x1600 pixels (except where specified).

Copy the images to anywhere you want (default is `/usr/share/backgrounds`), then right click on your desktop and choose *Change Desktop Background*. Click *Add...*, locate the image you want to set your wallpaper to and double click!



Congratulations!

Installation is now complete. Congratulations! You now have the Mac OSX user interface on your GTK desktop.

20. FAQ and Troubleshooting

1. Q: Compiz won't work.

A: Try going to System → Administration → Hardware Drivers and enabling your graphics card. Your system will automatically download any drivers if necessary. Restart afterwards, and Compiz should start automatically.

2. Q: I started AWN, but I can't see it!

A: You need Compiz to run AWN. Try doing the steps described above.

3. Q: Mac OSX cursor doesn't stay when I switch to Compiz!

A: Goto Applications → Accessories → Terminal and type in "sudo aptitude install compizconfig-settings-manager" (without the quotes.) After, goto System → Preferences → Advanced Desktop Effects Settings/CompizConfig Settings Manager. Click General Options and change the Cursor theme to the one you want.

4. Q: What is Global Menu (MacMenu)?

A: Ctrl+click [this link](#).

5. Q: Does Mac4Lin 1.0 work with GNOME versions older than 2.22?

A: No. Go [here](#) and download v0.4 for GNOME 2.20 and 2.18. You shouldn't be running an older version of GNOME than that.

6. Q: Does this version work on Ubuntu Intrepid?

A: As a matter of fact it does! A week before Ubuntu 8.10 was released we discovered that they have changed things enough that some theme elements in Mac4Lin 1.0 don't completely work with Ubuntu Intrepid. Since then we've found the problem and fixed it so you should have no problems using Mac4Lin 1.0 under Ubuntu 8.10 *Intrepid Ibex*. If you have problems, please let us know either in the support thread (<http://ubuntuforums.org/showthread.php?p=5767692>) or by filing a bug on our SourceForge site (<https://sourceforge.net/projects/mac4lin>).

21. Credits and Information

Thanks to.....

- D.J."Peng" Hardin and Exsecrabilus for updating the documentation
- DrP for the Mozilla Firefox/Thunderbird themes
- Laviano for urging me to release MacMenu version of GTK theme
- Maurizio for the GDM concept
- Mitko for the nm-applet
- Stido for weather replacement

I also thank all those who tested beta releases of Mac4Lin and everyone who is directly or indirectly involved in this project.

For any bug reports, comments, complaints or suggestions, please head to the project website and/or drop me a mail at infra_red_dude.users@sourceforge.net.

No part or whole of this guide should be reproduced without permission. The Apple logo is NOT bundled with the package. It is only for demonstration purpose.

Anirudh R. Acharya (a.k.a infra_red_dude)
Developer, Mac4Lin

E-Mail: infra_red_dude.users@sourceforge.net
Project Website: <http://sourceforge.net/projects/mac4lin>